

REFERENCE: ACME –2500787 – Rev: C

SCHEMATICS: HL6528–G & HL8548–G DEV–KIT

SHEET 1 TABLE OF CONTENT

SHEET 2 CONNECTORS & HEADERS

SHEET 3 RF & ADCs

SHEET 4 POWER SUPPLIES & PROTECTIONS

SHEET 5 MODULE TYPE DETECTION & VIO

SHEET 6 UAT0 & SPI & POWER ON & RESET

SHEET 7 UART1

SHEET 8 UIMs & PWMs

SHEET 9 USBs & I2C

SHEET 10 GPIOs & HSIC

SHEET 11 AUDIO & PCM

SHEET 12 JTAG & CLOCKS

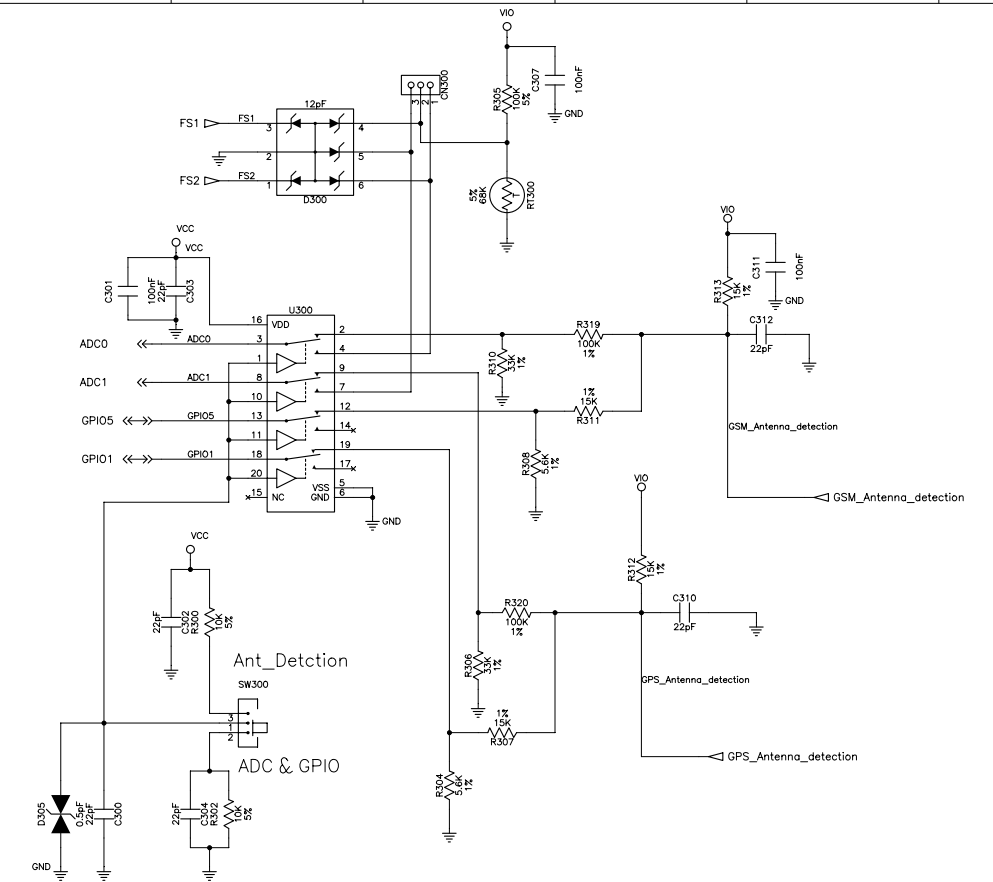
SHEET 13 MAIN BLOCKS

SHEET 14 COMPONENTS PLACEMENT

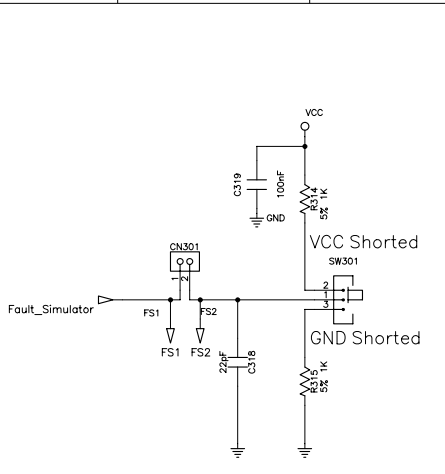
This document contains information which is proprietary and confidential to Sierra Wireless Inc. Disclosure to Persons other than the officers, employees, agents or subcontractors of the company or licensees of this document without the prior written permission of Sierra Wireless Inc. is strictly prohibited.
Copyright (C) 2013

	SIERRA WIRELESS™		SITE	ILM
			LEAD ENGINEER	Sierra Wireless
PROJECT	HL6528–G & HL8548–G DEV–KIT		REV SCH	C C
SCHEMATIC	2500787		DATE/TIME	11–02–2014_16:28
			PAGE	of 12

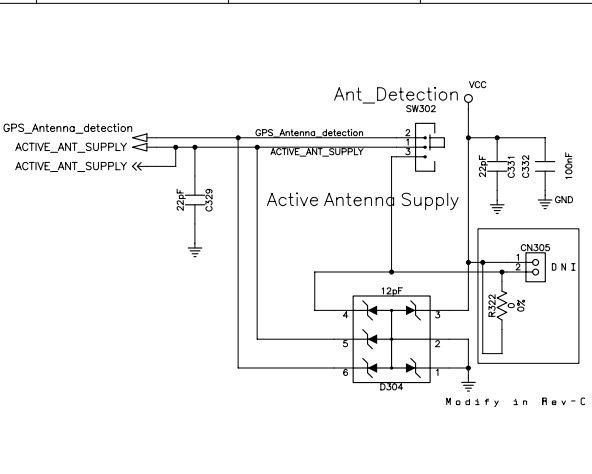
TABLE OF CONTENT



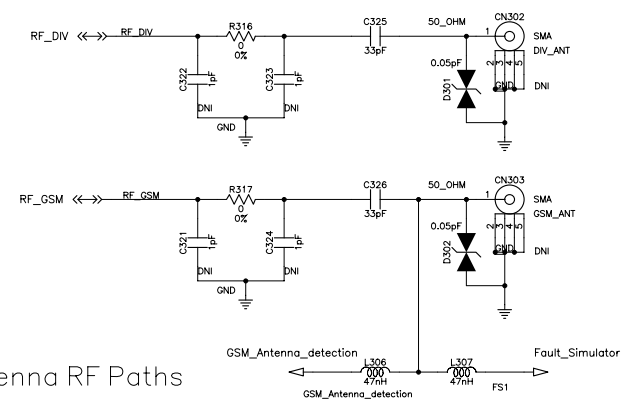
Antennas Detection Circuits



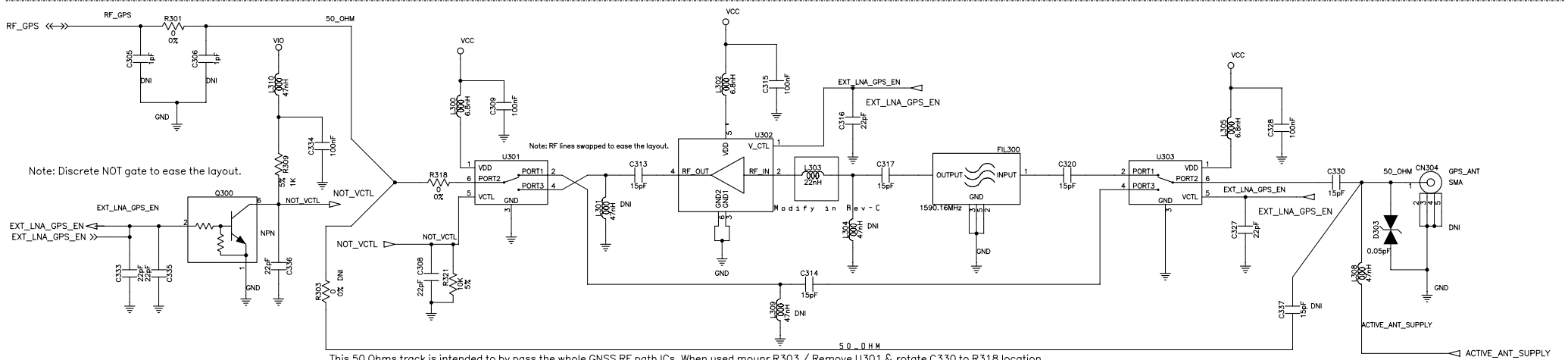
GSM Antenna Fault Simulator



GPS Active Antenna Selector



GSM & Diversity Antenna RF Paths

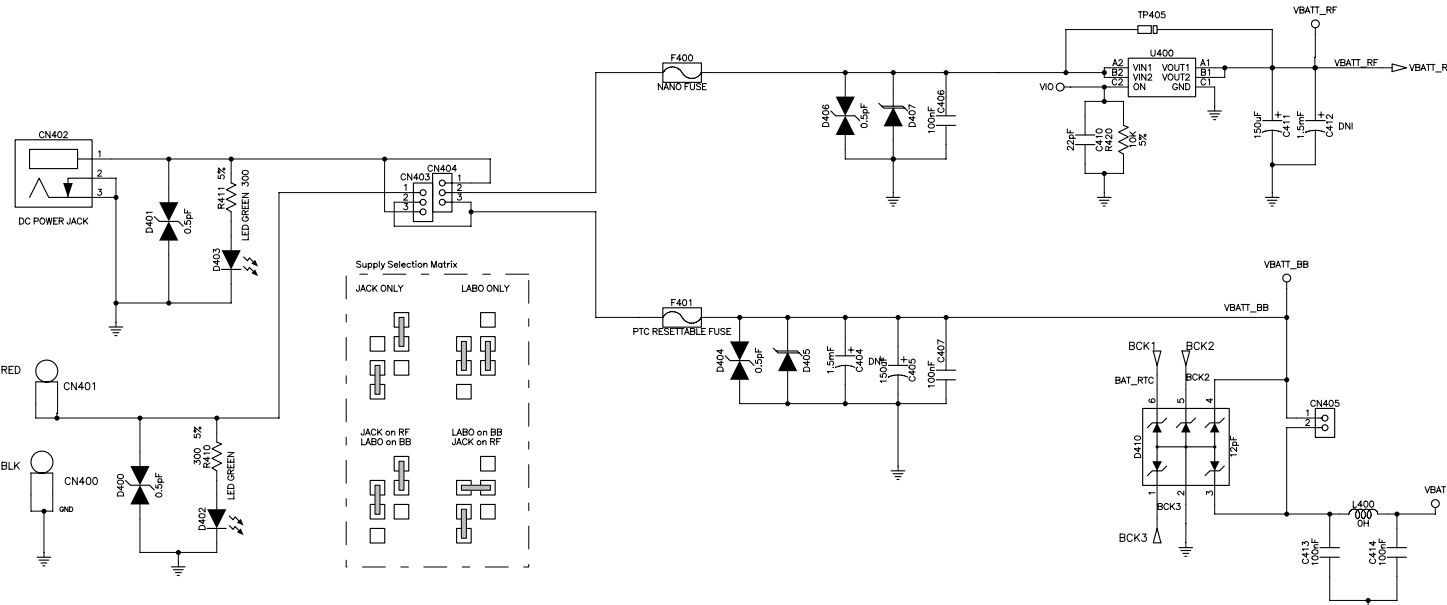


GPS Antenna RF Path

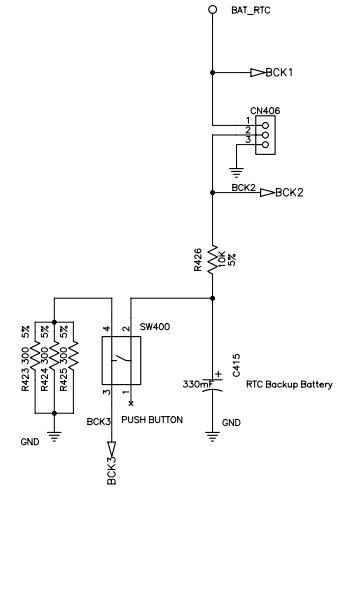
This document contains information which is proprietary and confidential to Sierra Wireless Inc. Disclosure to Persons other than the officers, employees, agents or subcontractors of the company or licensees of this document without the prior written permission of Sierra Wireless Inc. is strictly prohibited. Copyright (C) 2013

PROJECT: HL6528-G & HL8548-G DEV-KIT
 SCHEMATIC: 2500787
 FILE: RF_AND_ADCs
 DATE/TIME: 11-02-2014_16:29
 PAGE: OF 12

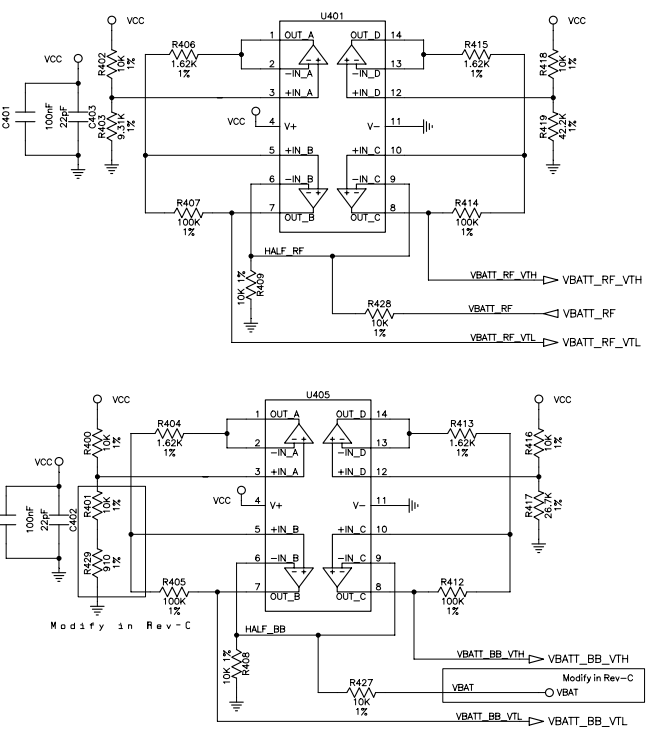
SHORT CHEVRON TP405 to Bypass U400



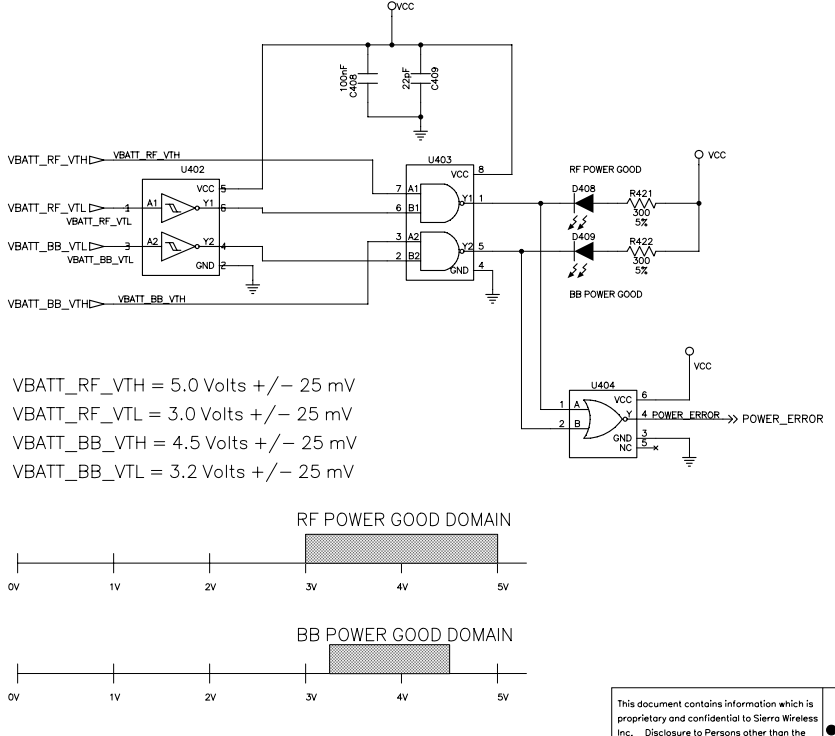
Power Supplies



Vbackup & Discharge circuit



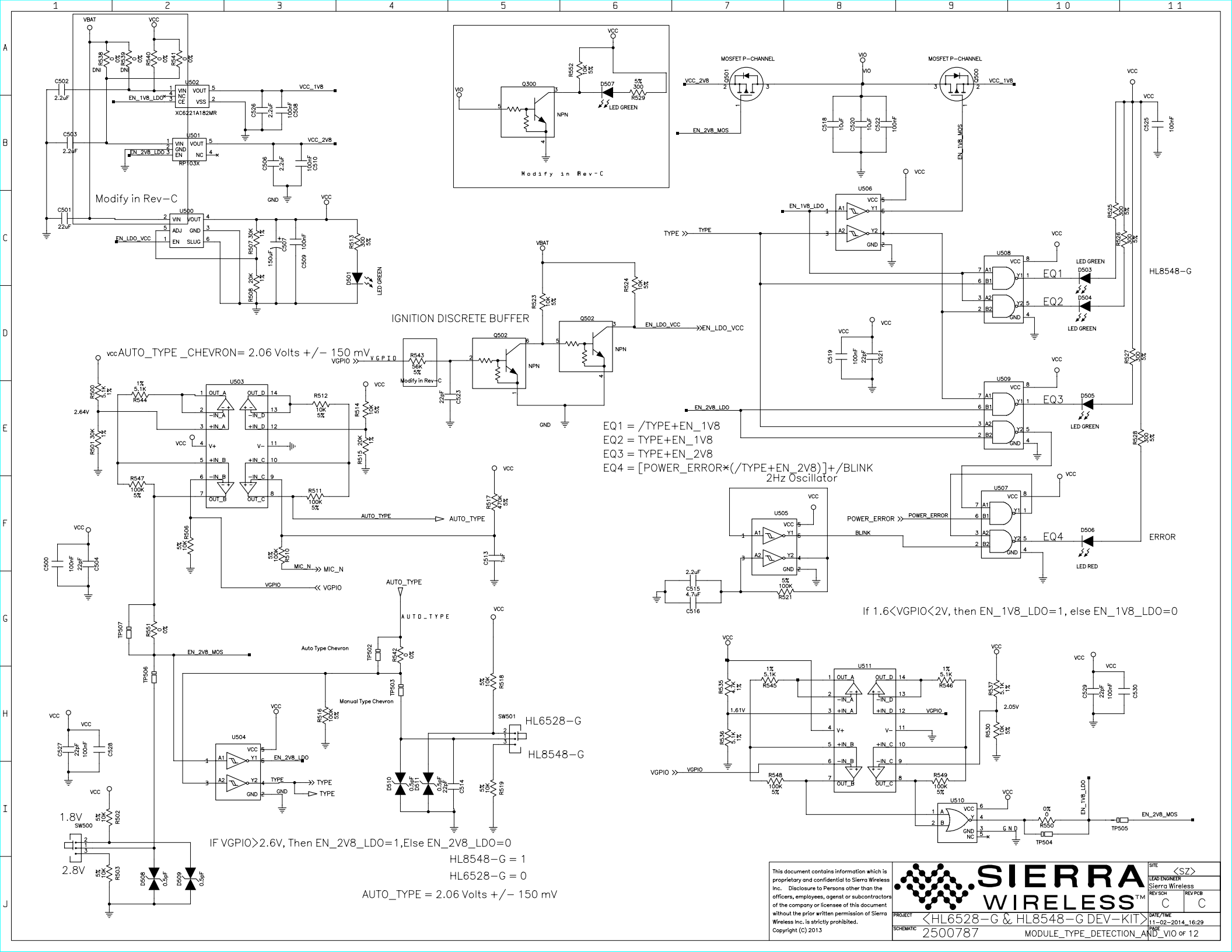
Power indicators



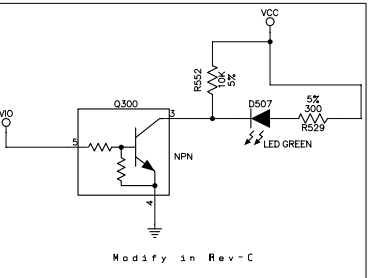
Ground Test Hooks

This document contains information which is proprietary and confidential to Sierra Wireless Inc. Disclosure to Persons other than the officers, employees, agents or subcontractors of the company or licensees of this document without the prior written permission of Sierra Wireless Inc. is strictly prohibited. Copyright (C) 2013

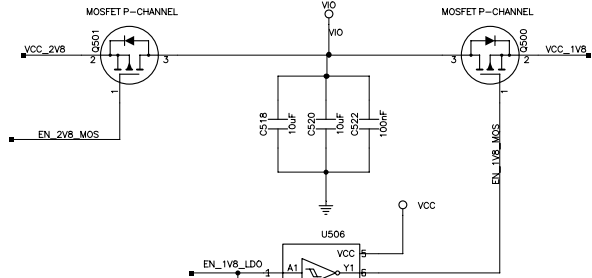
		SITE	ILM
		LOAD ENGINEER	Sierra Wireless
PROJECT	HL6528-G & HL8548-G DEV-KIT	REV SCH	C C
SCHEMATIC	2500787	DATE/TIME	11-02-2014_16:29
		PAGE	OF 12



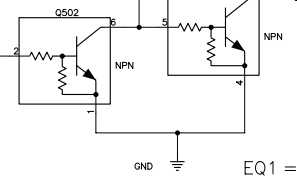
Modify in Rev-C



Modify in Rev-C



IGNITION DISCRETE BUFFER



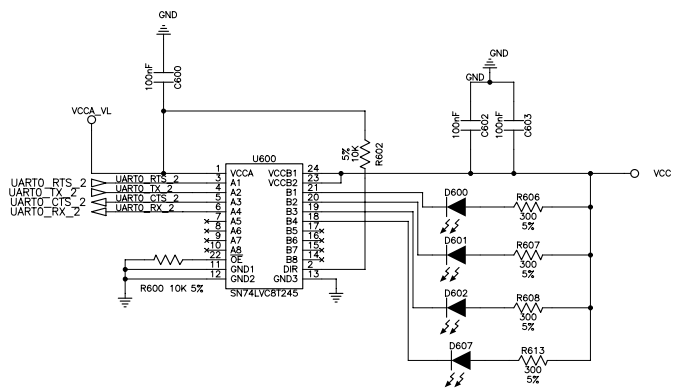
EQ1 = /TYPE+EN_1V8
 EQ2 = TYPE+EN_1V8
 EQ3 = TYPE+EN_2V8
 EQ4 = [POWER_ERROR*(/TYPE+EN_2V8)]+/BLINK
 2Hz Oscillator

If 1.6<VGPIO<2V, then EN_1V8_LDO=1, else EN_1V8_LDO=0

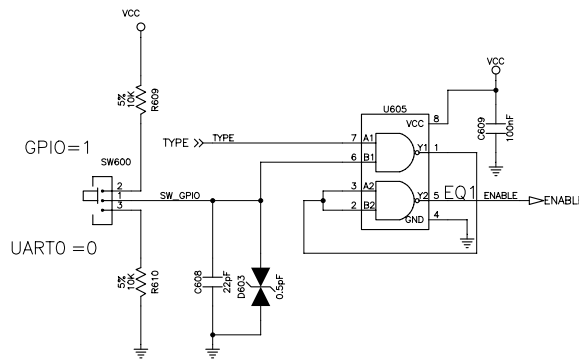
IF VGPIO>2.6V, Then EN_2V8_LDO=1,Else EN_2V8_LDO=0
 HL8548-G = 1
 HL6528-G = 0
 AUTO_TYPE = 2.06 Volts +/- 150 mV

This document contains information which is proprietary and confidential to Sierra Wireless Inc. Disclosure to Persons other than the officers, employees, agents or subcontractors of the company or licensees of this document without the prior written permission of Sierra Wireless Inc. is strictly prohibited.
 Copyright (C) 2013

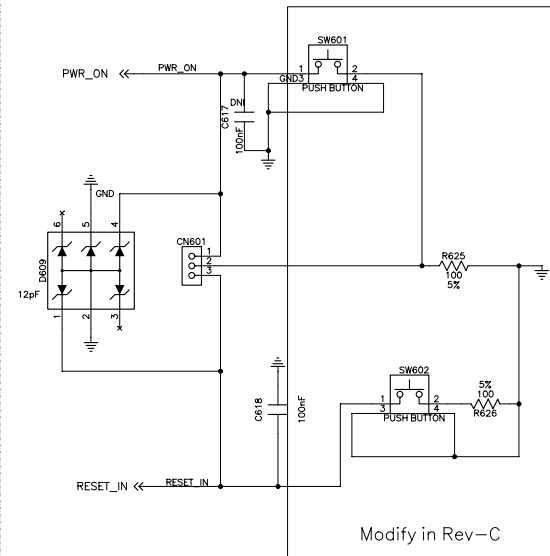
		SITE <SZ> LDO ENGINEER Sierra Wireless REV SCH C C
		PROJECT <HL6528-G & HL8548-G DEV-KIT> DATE/TIME 11-02-2014_16:29 SCHEMATIC 2500787 MODULE_TYPE_DETECTION_AND_VIO OF 12



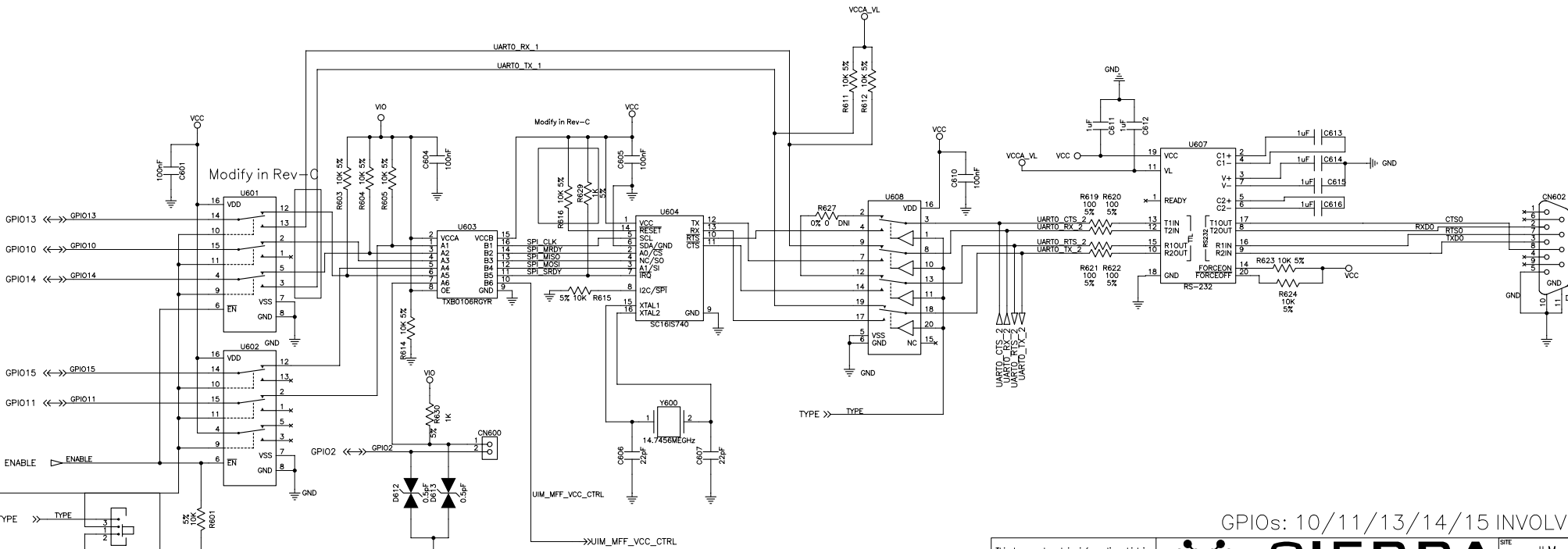
UART0 & GPIOs Led Indicators



UART0 & GPIOs SELECTION



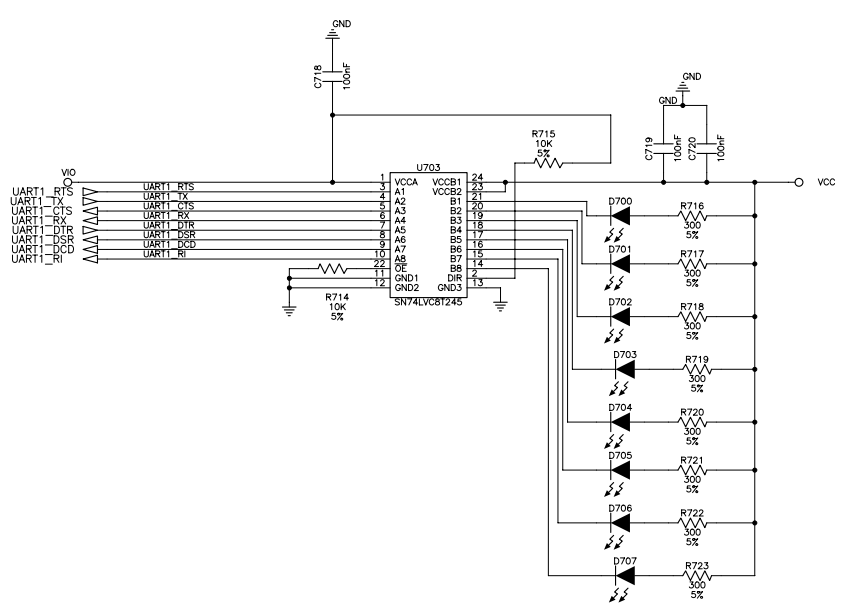
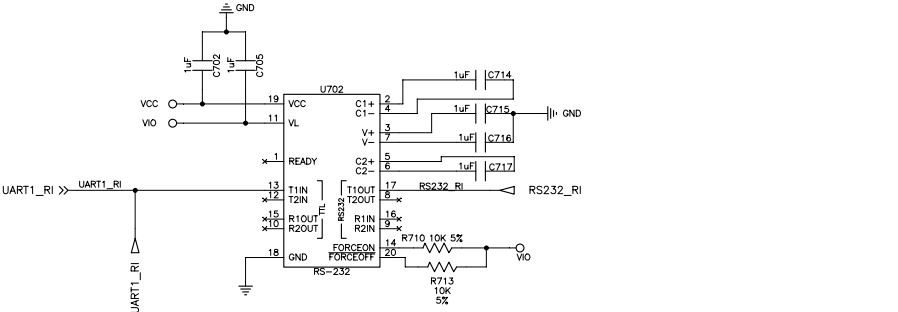
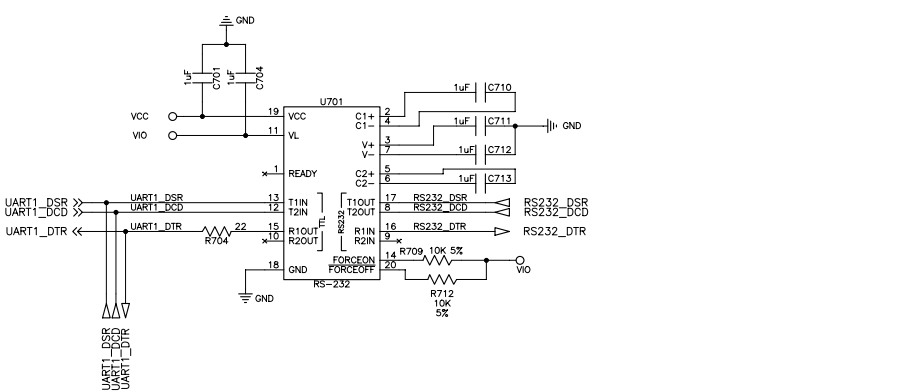
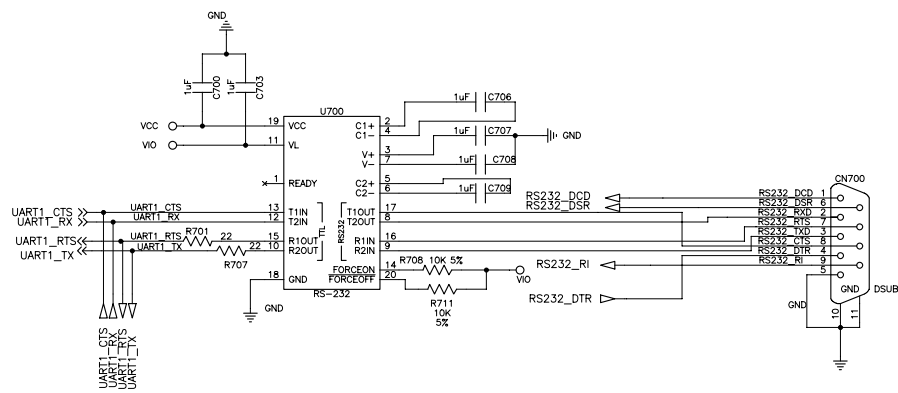
Power On & Reset side switches



UART0 or SPT to UART with level adaptors & RS232 Transceiver

GPIOs: 10/11/13/14/15 INVOLVED

<p>This document contains information which is proprietary and confidential to Sierra Wireless Inc. Disclosure to Persons other than the officers, employees, agents or subcontractors of the company or licensees of this document without the prior written permission of Sierra Wireless Inc. is strictly prohibited. Copyright (C) 2013</p>				<p>SITE ILM</p>
<p>PROJECT HL6528-G & HL8548-G DEV-KIT</p>		<p>DATE/TIME 11-02-2014_16:29</p>		<p>DESIGNED BY Sierra Wireless</p>
<p>SCHEMATIC 2500787</p>		<p>REV PCB C C</p>		<p>REV PCB C C</p>
<p>UART0_SPI_POWER_ON_AND_RESET</p>				<p>PAGE OF 12</p>



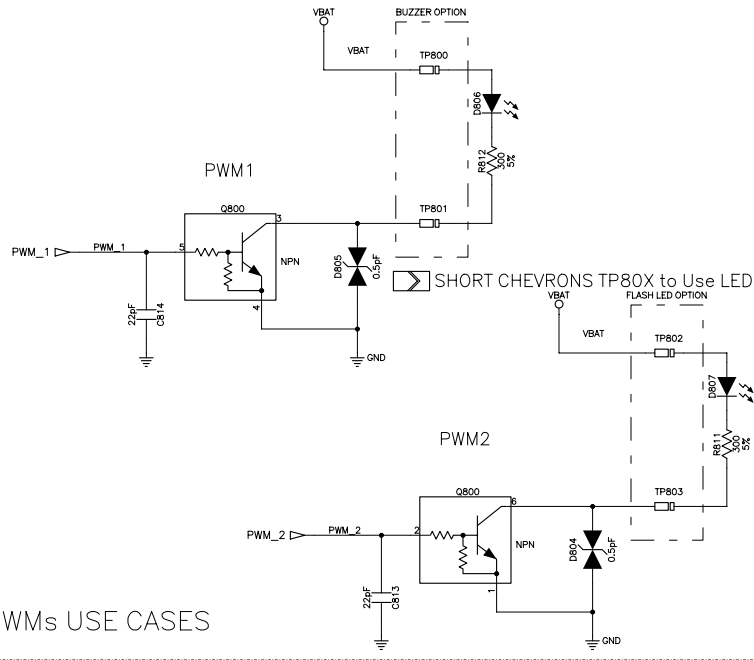
UART1 Led indicators

3 Mbps UART1 Transceiver

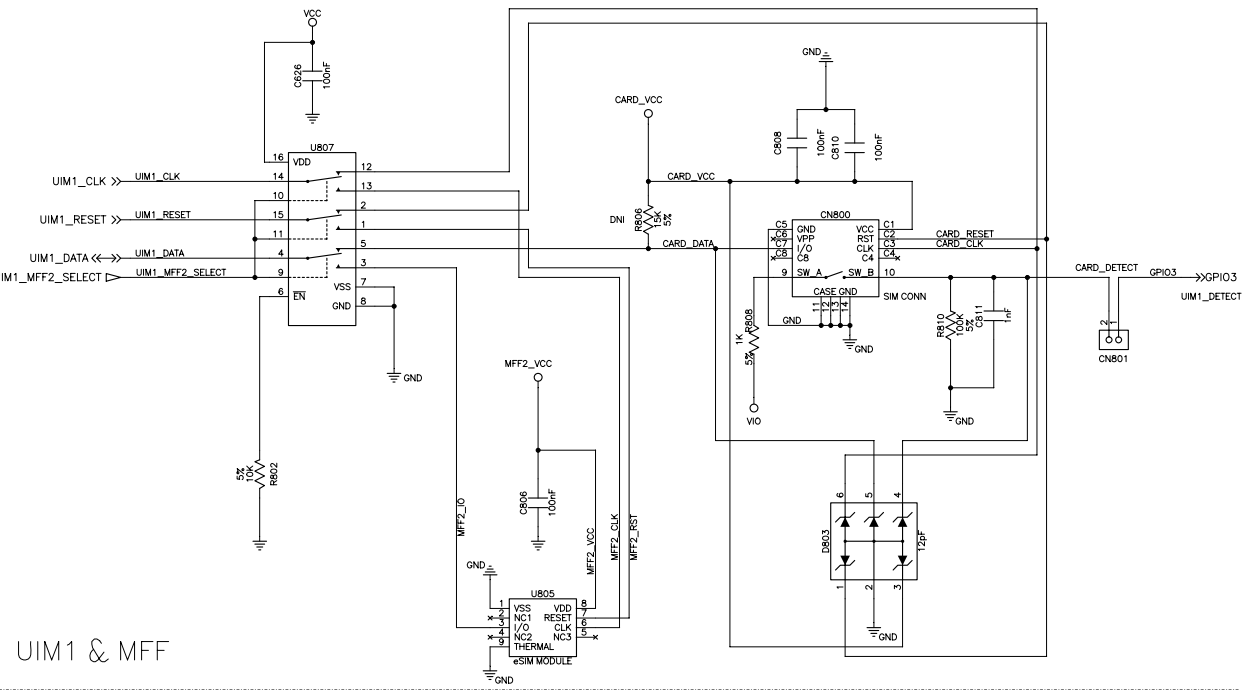
This document contains information which is proprietary and confidential to Sierra Wireless Inc. Disclosure to Persons other than the officers, employees, agents or subcontractors of the company or licensees of this document without the prior written permission of Sierra Wireless Inc. is strictly prohibited.
Copyright (C) 2013

		SITE ILM LEO ENGINEER Sierra Wireless REV SCH C C	
		PROJECT HL6528-G & HL8548-G DEV-KIT DATE/TIME 11-02-2014_16:29 SCHEMATIC 2500787 PAGE OF 12	

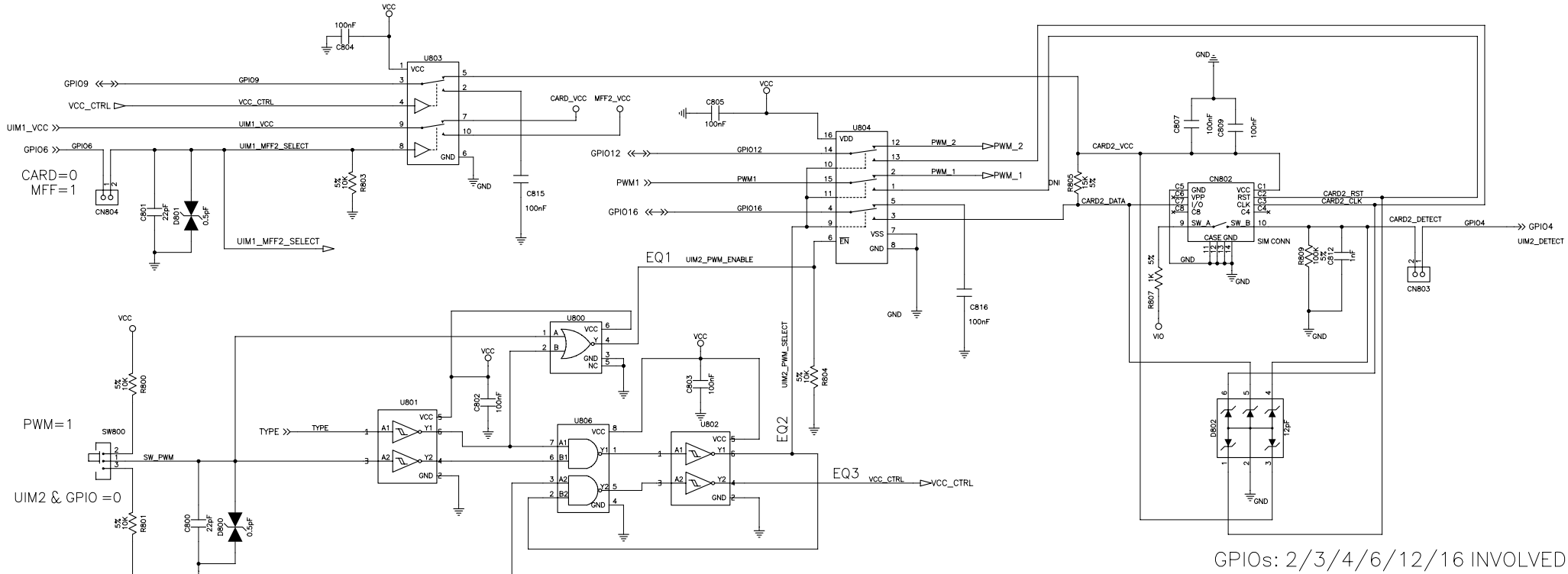
USE CHEVRONS TP80X to Connect Buzzer



PWMs USE CASES



UIM1 & MFF



UIM2 & PWM

EQ1 = TYPE*SW_PWM
 EQ2 = /TYPE*SW_PWM
 EQ3 = /(TYPE+SW_PWM)*UIM_MFF_VCC_CTRL

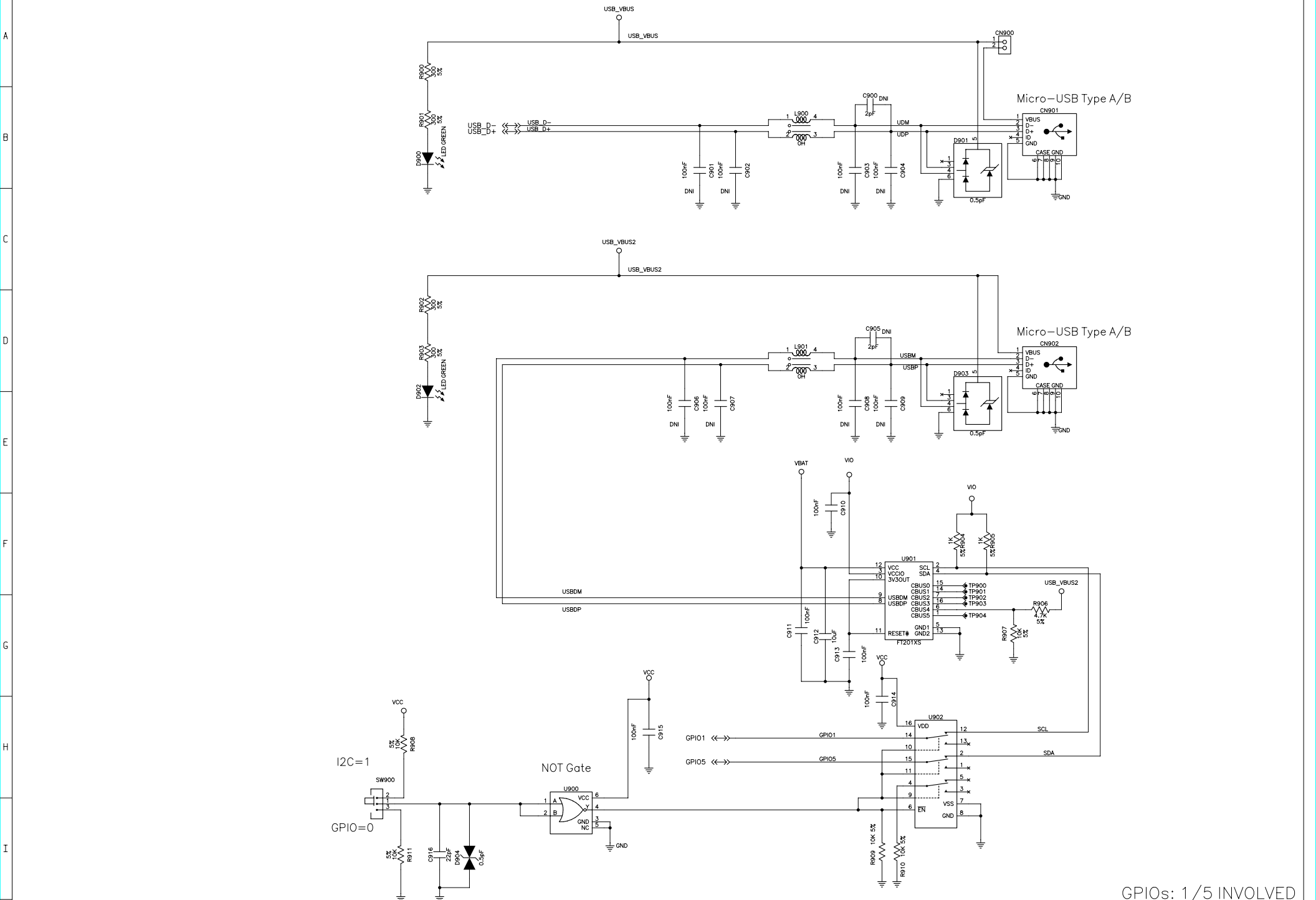
GPIos: 2/3/4/6/12/16 INVOLVED

This document contains information which is proprietary and confidential to Sierra Wireless Inc. Disclosure to Persons other than the officers, employees, agents or subcontractors of the company or licensees of this document without the prior written permission of Sierra Wireless Inc. is strictly prohibited. Copyright (C) 2013

PROJECT SCHEMATIC	HL6528-G & HL8548-G DEV-KIT		DATE/TIME 11-02-2014_16:30
	2500787		PAGE OF 12

SIERRA WIRELESS™

UIMs AND PWMs



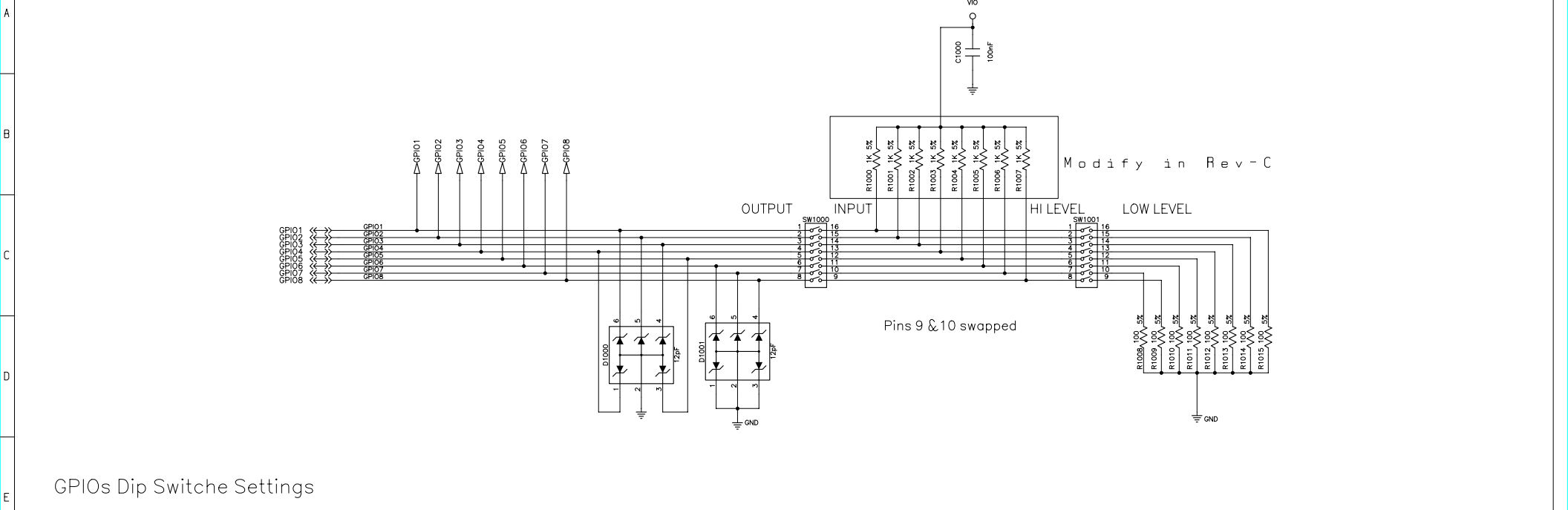
I2C & USB

GPIOs: 1/5 INVOLVED

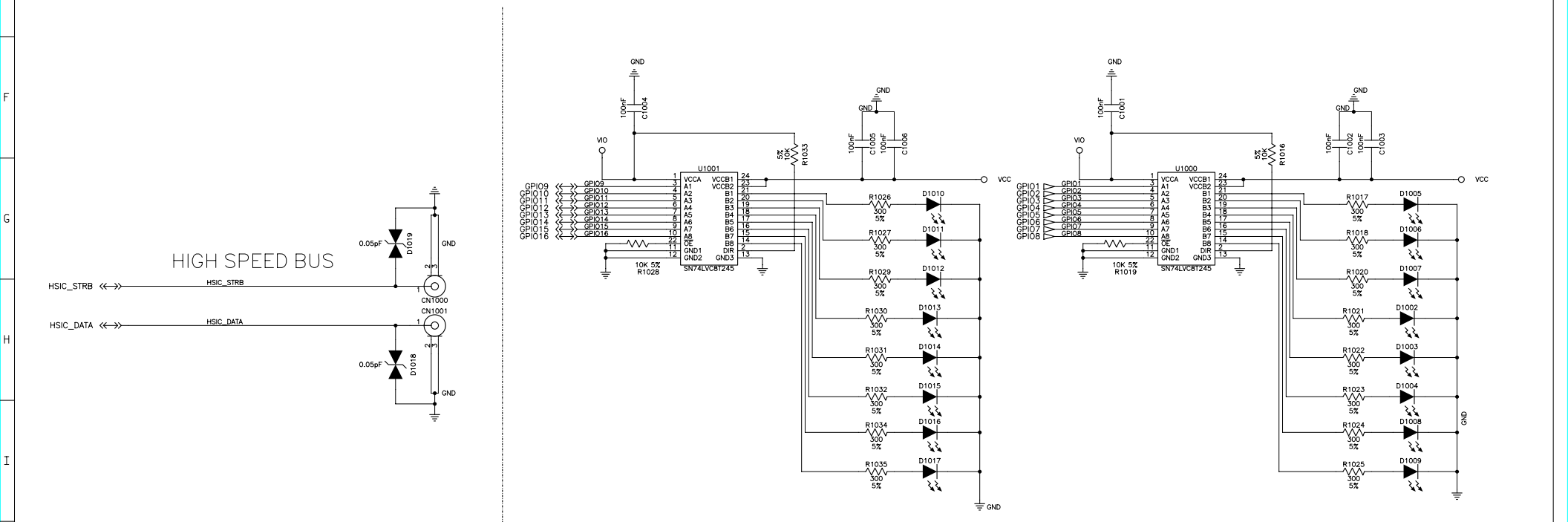
This document contains information which is proprietary and confidential to Sierra Wireless Inc. Disclosure to Persons other than the officers, employees, agents or subcontractors of the company or licensees of this document without the prior written permission of Sierra Wireless Inc. is strictly prohibited.
Copyright (C) 2013

PROJECT	HL6528-G & HL8548-G DEV-KIT	DATE/TIME	11-02-2014_16:30
SCHEMATIC	2500787	REV	C
		REV PCB	C
		PAGE	OF 12

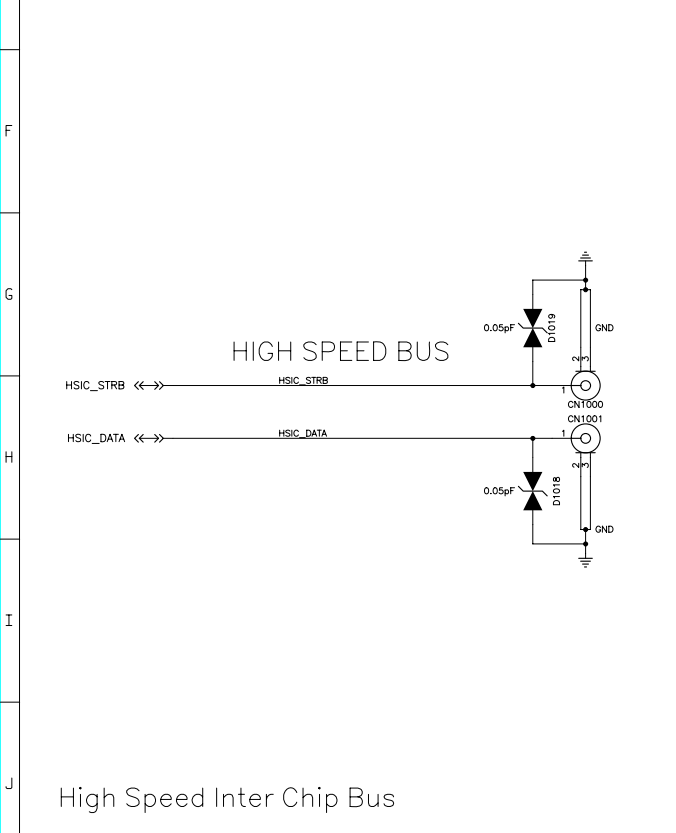
USB_AND_I2C



GPIOs Dip Switch Settings



GPIOs Led Indicators



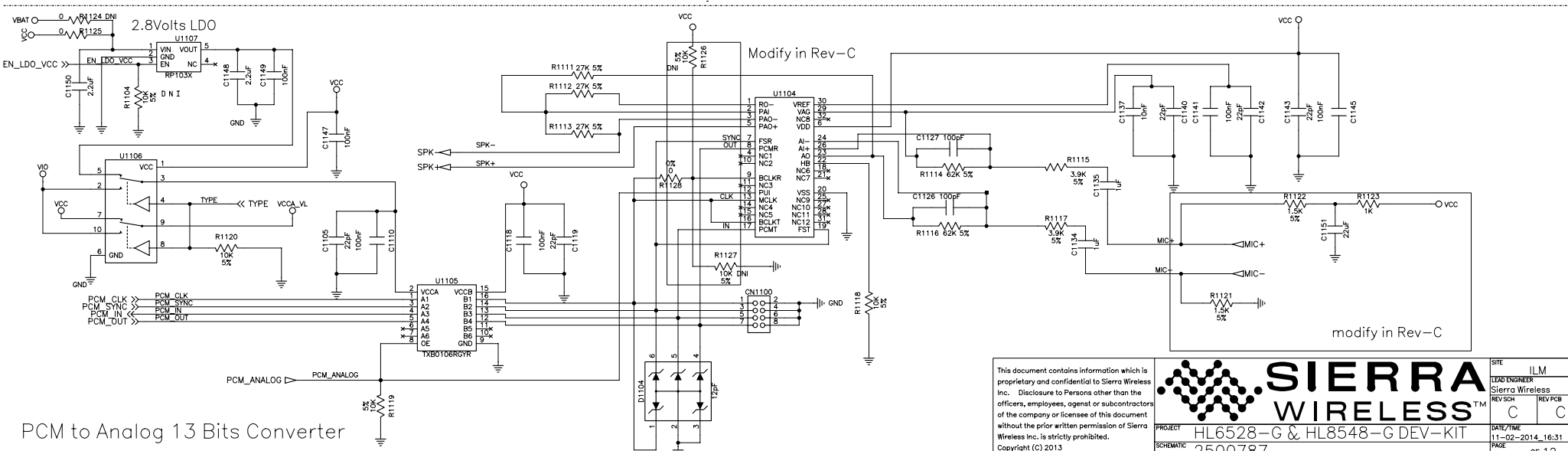
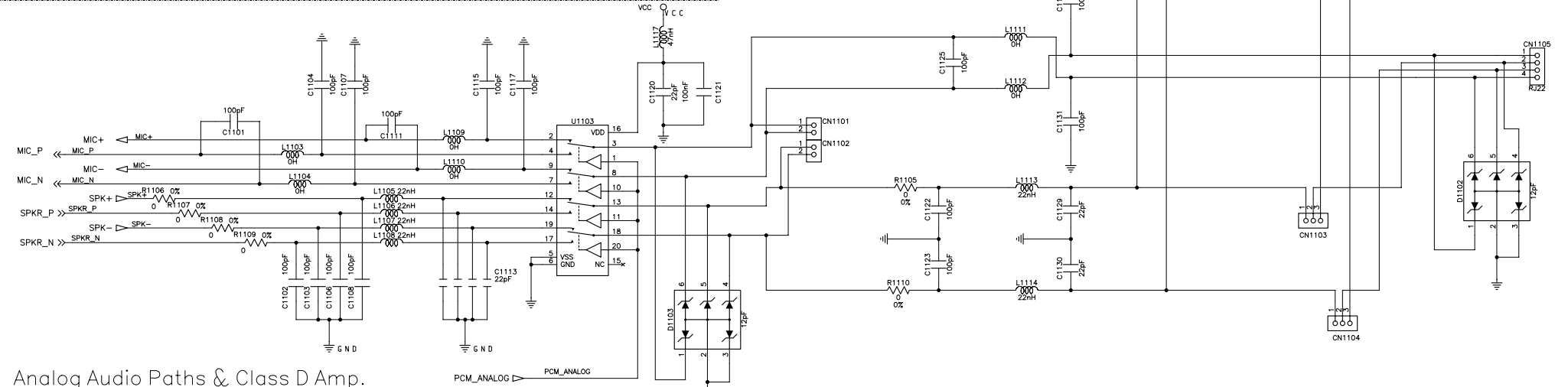
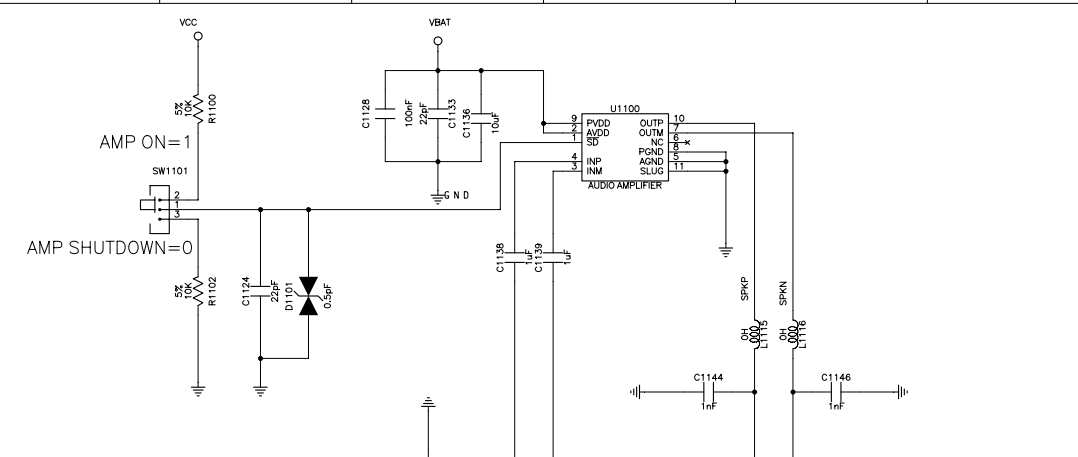
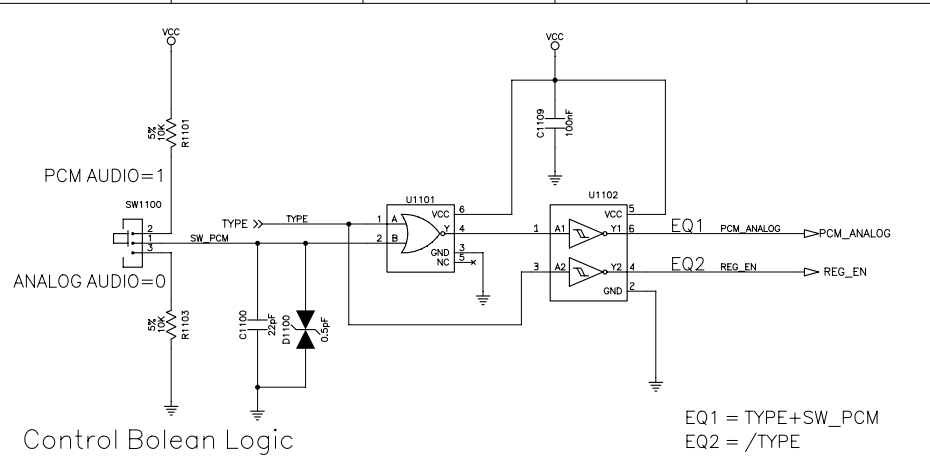
High Speed Inter Chip Bus

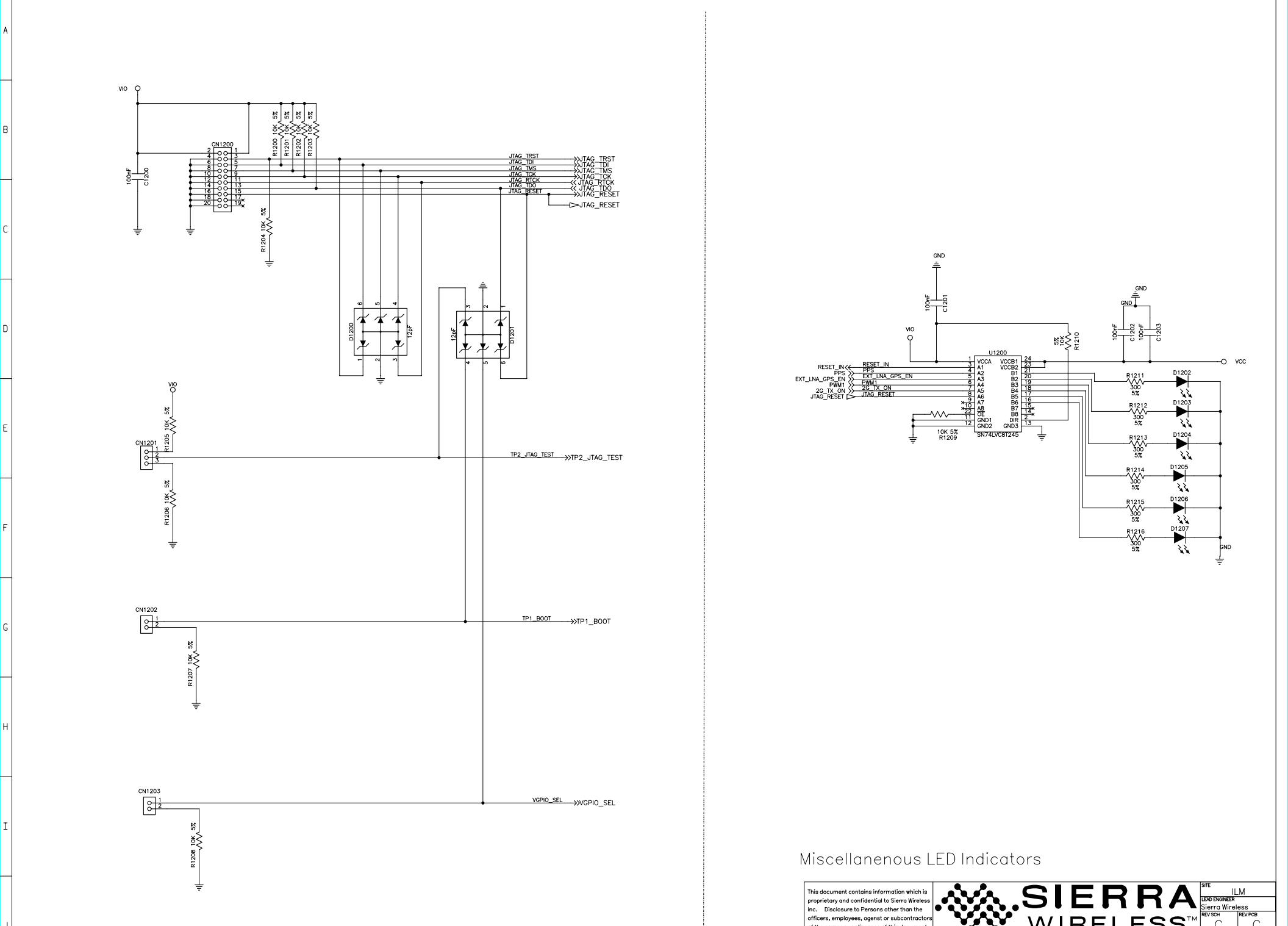
This document contains information which is proprietary and confidential to Sierra Wireless Inc. Disclosure to Persons other than the officers, employees, agents or subcontractors of the company or licensees of this document without the prior written permission of Sierra Wireless Inc. is strictly prohibited.
Copyright (C) 2013

SIERRA WIRELESSTM

PROJECT	HL6528-G & HL8548-G DEV-KIT	DATE/TIME	11-02-2014_16:30
SCHEMATIC	2500787	PAGE	OF 12

GPIOs AND HSIC





JTAG & Clocks

Miscellaneous LED Indicators

<p>This document contains information which is proprietary and confidential to Sierra Wireless Inc. Disclosure to Persons other than the officers, employees, agents or subcontractors of the company or licensees of this document without the prior written permission of Sierra Wireless Inc. is strictly prohibited. Copyright (C) 2013</p>				<p>SITE ILM</p>
<p>PROJECT HL6528-G & HL8548-G DEV-KIT</p>		<p>DATE/TIME 11-02-2014_16:30</p>		<p>LEAD ENGINEER Sierra Wireless</p>
<p>SCHEMATIC 2500787</p>		<p>REV SCH C</p>		<p>REV PCB C</p>
<p>JTAG_AND_CLOCKS</p>				<p>PAGE OF 12</p>